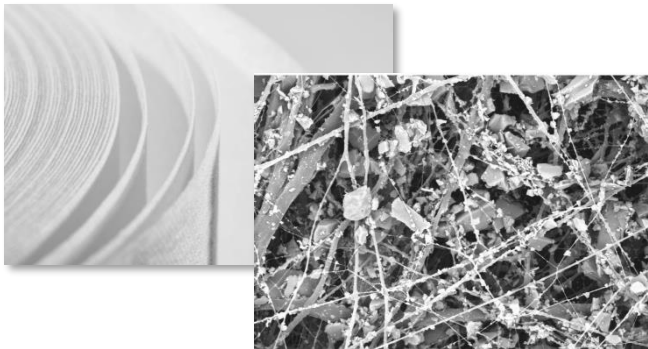


## 100% Synthetic for Your Filtration Business



## IREMA Filter Media



## Features & Benefits

- ✓ 100% synthetic
- ✓ Excellent fiber stability
- ✓ 100% humidity resistant
- ✓ Microbial inert acc. to DIN EN ISO 846
- ✓ Excellent efficiency
- ✓ High dust holding capacity
- ✓ No fiber shedding through endless fibers
- ✓ 100% incinerable
- ✓ Fire classification F1 to DIN 53438-3
- ✓ Long filter lifetime
- ✓ Applicable for different standards
- ✓ Customized media development upon volume
- ✓ Standard rolls from stock
- ✓ Customized roll widths

### MEDIA DESIGN in 3D.

Our various filter media, which are well-known in the market for many years, feature a **multi-layer structure** with a **pre-filter layer**, followed by **progressive depth filtration layers**, thus achieving an **excellent filter lifetime and energy efficiency**. All our fibers are produced in a solvent-free, melt-based and environmentally friendly proprietary process and **do not contain any chemical binder**. The endless fibers are **highly damage resistant** and **totally non-shedding**.

The combination of different fiber diameters allows us to design and manufacture **progressive filter media in 3D**.

**Polypropylene (PP) as the basic material** has additional outstanding advantages. PP-material is hydrophobic and does not support the growth of microorganism such as bacteria, mold and fungi.

### MACHINE TECHNOLOGY.

IREMA's filter media products are exclusively manufactured on production machines designed and built in-house. Our systems are highly automated, which leads to an excellent price-performance ratio. The specific manufacturing technology for our filter media enables us to design media out of coarse, fine and ultrafine fibers, either meeting standards or customer requirements.

### APPLICATIONS.

IREMA filter media are used in a variety of applications where different technical features are a must:

- Cabin Air
- HVAC
- Engine Air
- Liquid Filtration



## 100% Synthetic for Your Filtration Business



Our range of filter media comprises different product categories featuring the following characteristics:

### Latest development – synthetic replacement for triboelectric filter materials

- Suitable for producing **wireback filters**
- Very **low pressure drop** and **excellent filtration efficiencies**
- **Pleatable** through the lamination of a support layer
- Wide range of applications (medical, residential, automotive)

NEW  
NEW  
NEW

### Micro 2000 - micro fibers

- Low pressure drop
- Excellently pleatable
- High fiber stability
- For many standardized filtration applications
- For products according to DIN EN 779:2002, Ashrae 52.2 and automotive

### Nano 3000 - micro- and fine fibers („Integrated Nanofiber Technology“)

- High efficiencies regarding capture of fine dust particles
- Best pressure drops and excellent mechanical efficiency
- Distinctly improved lifetime through 3D depth filtration
- For products according to DIN EN 779:2012, Ashrae 52.2 and automotive

### Eco 4000 - electret fibers

- Excellent efficiencies regarding capture of fine dust particles
- Outstanding air permeabilities
- Low pressure drops
- Excellent lifetimes
- Best dust holding capacities
- For high requirements regarding energy efficiency
- For products according to ISO 16890, DIN EN 779:2012 and Ashrae 52.2

